

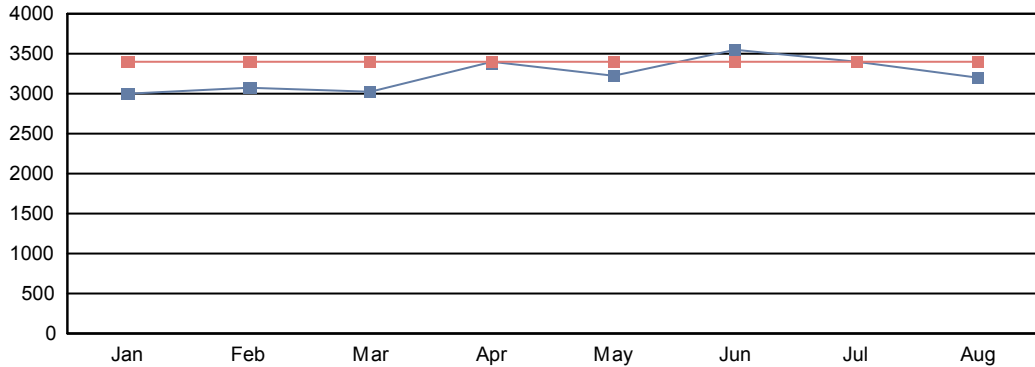
C-T24 COMBINE 924

■ Actual ■ Target

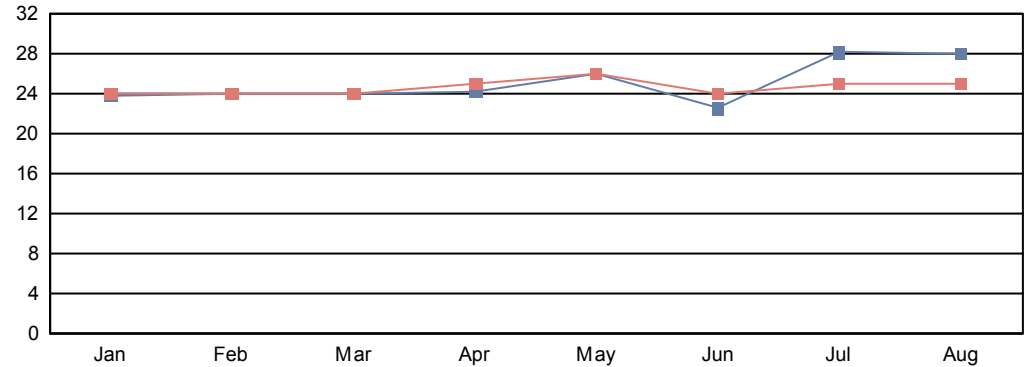
2011

	Jan.	Feb.	Mar.	April	May	June	July	Aug.	Sept.	Oct.	Nov.	Dec.	Actual 2010	Actual 2011	Target
m ² / WH	3,006	3,072	3,022	3,391	3,231	3,540	3,398	3,210					3,217	3,228	3,400
Speed (sht / RH)	6,222	6,230	6,233	6,149	6,408	6,314	6,580	5,548					6,550	6,306	
Av. Set-Up (min)	24	24	24	24	26	23	28	28					29	25	25
Downtime (% WH)	16	18	18	16	16	14	15	14					18	16	17
Stop Hours (%)	32	34	35	32	33	31	33	32					35	33	33
No. Set-Ups	162	176	198	171	180	163	166	116					154	174	
Open Hours (OH)	467'20	476'07	530'08	458'26	530'44	417'09	473'52	322'33					474'25	479'06	
Work Hours (WH)	427'01	427'56	462'37	411'03	463'03	371'49	426'09	292'12					419'50	427'05	
Av. Dur / Order	2'37	2'25	2'20	2'23	2'35	2'16	2'34	2'28					2'43	2'27	
Av. Area / Order (m ²)	7,875	7,470	7,096	8,104	8,359	8,026	8,776	7,949					8,747	7,936	
Av. Qty / Order (sht.)	11,157	9,967	9,468	9,938	11,175	9,926	11,362	9,371					11,508	10,403	
Area / Sheet (m ²)	0,71	0.75	0.75	0.82	0.75	0.81	0.77	0.85					0.76	0.76	

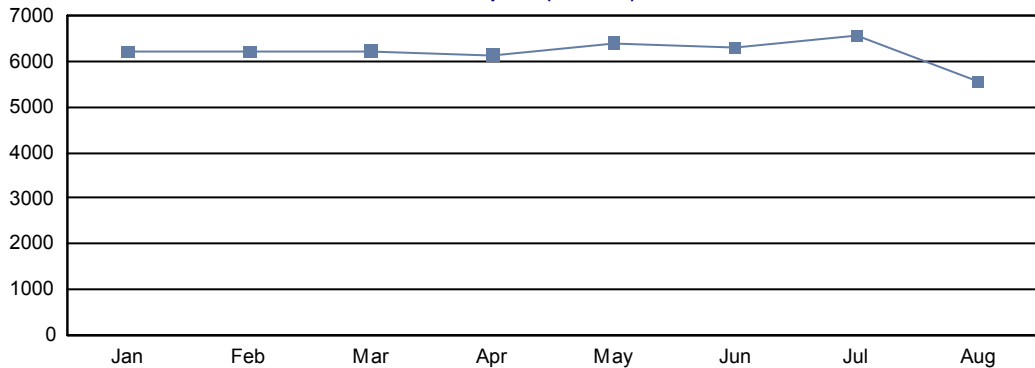
m² / WH



Av. Set-Up (min)



Speed (sht / RH)



Downtime (% WH)

